



GBM#1

# Welcome to Society for Viral Studies

*1/23/2023*



# Welcome New Members!



**Please sign in using the QR Code for attendance!**

# Active Member Requirements

**01**

**Be a UF Student**

**02**

**Attend ~  $\frac{2}{3}$  of meetings**

**03**

**Attend ~  $\frac{1}{3}$  of events**

## **Benefits**

- Priority for trip sign-ups
- Priority for committee positions

# Meet the Officers!



Brianna Garcia  
President



Antonia LoFranco  
Vice President



Erica Roberts  
Treasurer



Akash Shah  
Journal Club Director



Michele Himadi  
Secretary



Kira Kazi  
Event Director



Sophie Penafiel  
Public Relations Director



Urvi Patel  
Trip Director

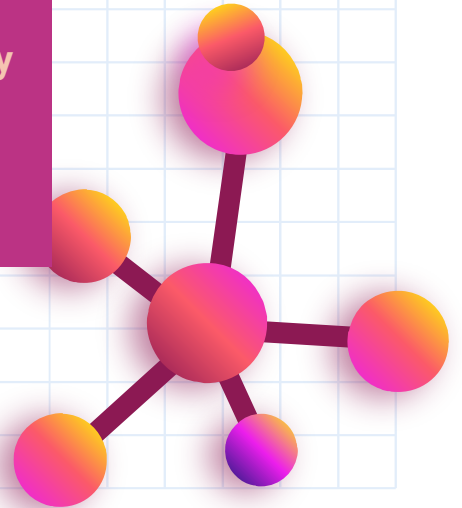
# Meet Our Faculty Advisor



**Dr. Niam Montazeri**

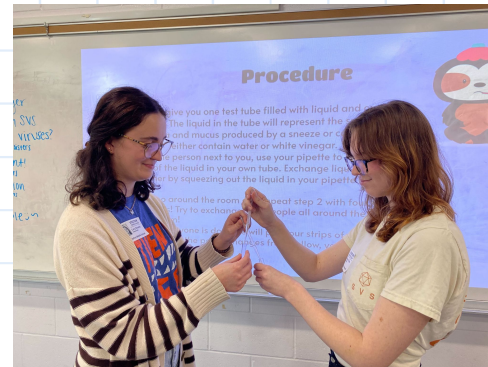
**Assistant Professor of Food Virology**

**Department of Food Science and  
Human Nutrition**



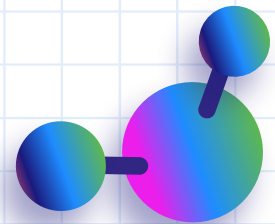
# Middle School Outreach Volunteering

- Thank you Lucy and Lindsay for helping at December's Middle School Outreach day with Ms. Ivy Grob!
- Ms. Chloe Winant's class is doing a Cell Dome presentation on January 31st. Members can sign up by contacting me.
- Ms. Winant and UF's General Virology professor, Dr. Melissa Jones, are collaborating on a lesson on pathogens that SVS will be part of as well. Dates unknown as of now.
- Look out for a poll in the volunteering channel to survey availability!



# Upcoming Volunteering Opportunity

- Microscope Pond Life study at Howard Bishop Middle
  - The students will be using prepared slides and wet mounts to study microscopic pond life
  - Two days:
    - Thursday January 26 and Friday January 27
    - Class times are 10:25am, 11:59am, 1:53pm and 2:41pm
- Speak to me after the meeting or reach out through slack if you are interested! You may come for just a few class periods, or all day!



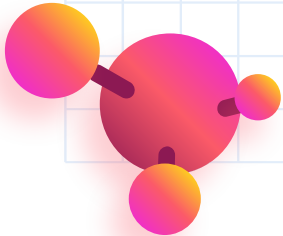
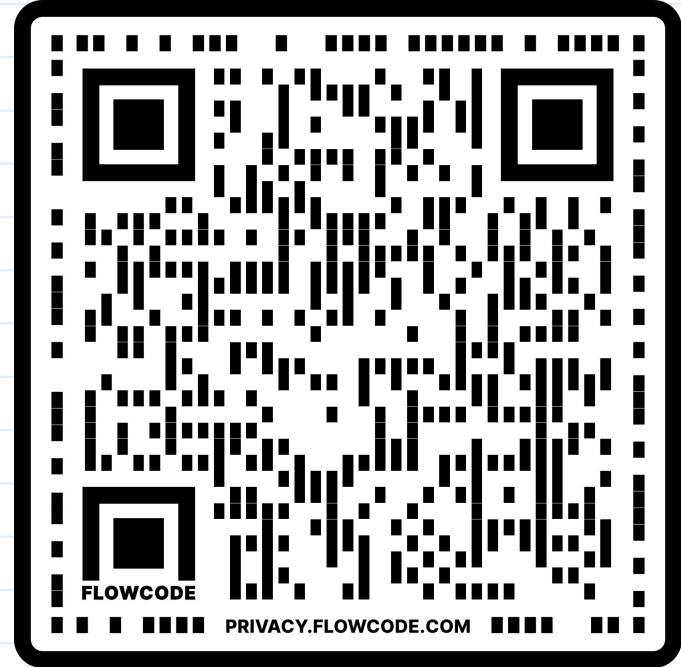
# Healthcare and Virology Panel Committees

- This Spring we will be putting on our annual Healthcare and Virology career panels!
- We will be bringing in professionals from a variety of fields to speak with us about their research and occupations (a GREAT opportunity to network and ask questions!)
- We will be recruiting members to help us put these events on! Panel Committee members will help with:
  - Contacting professionals in a business professional manner
  - Helping organize event specifics
  - Coming up with questions for the panel
  - Organizing food and refreshments for the events
  - Creating social media posts for the event
- Being on the Panel Committee is also a good opportunity for those wanting to run for an executive position in SVS at the end of the semester



# Panel Committee Application

- Please fill out this form accordingly to apply for the Panel Committee!
- Applications are due February 20th (one week before GBM 3)
- If you are selected, you will be added to a private slack channel to organize event specifics
- [https://docs.google.com/forms/d/e/1FAIpQLScG4GrjO\\_nvRBMzuVBgFAj\\_PGtop-qYVC7U7AJj9dzCjuITXdA/view\\_form?usp=sf\\_link](https://docs.google.com/forms/d/e/1FAIpQLScG4GrjO_nvRBMzuVBgFAj_PGtop-qYVC7U7AJj9dzCjuITXdA/view_form?usp=sf_link)



# Upcoming Events!

## Krishna Lunch



Friday,  
February 3rd  
at 11am

## Lake Wauberg



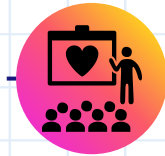
Sunday,  
February 5th  
at 10:30am  
Weather  
Permitting

## Bento Fundraiser



Thursday,  
February 9th  
11am - 11pm  
at MIDTOWN

## Krishna Lunch



Monday,  
February 13th  
at 7:30pm  
Reitz Union  
Room 3320

# Journal Presentation & Special Guest Speaker

- Next journal breakdown presentation will be at the next GBM! Topic will regarding CRISPR/Cas9 genome editing. More details to follow on our instagram.
- Special guest speaker to present her research focusing on dementia and parkinson's work
  - Will be sending out a breakdown of their work the week prior, be sure to get your questions in!
  - Date: TBA

# Merch and Other Cool Stuff

- Our NEW T-shirts are for sale!
  - \$20 each
- We still have some of our special stickers! And we are ordering many more new designs!
  - \$3 each
- Rep SVS with logo stickers and viral outreach buttons!
  - \$1 each
- Grad cords will be available for active members who are graduating.
  - \$10 each
- For all purchases you can Venmo @ericaroberts or pay in cash :)



# Upcoming Outings!



## Strawberry Picking

Roger's Farm  
Gainesville, FL

CRITTER CREEK FARM SANCTUARY  
PRESENTS

←❤️→

**FARMERS  
MOO-KET**

Sunday,  
February 5th  
12:00-4:00pm  
12626 NW CR 231  
Gainesville, FL 32609

A cartoon illustration of a pink pig standing and facing forward. It has a small red heart on its forehead and several red hearts floating around it, some with radiating lines. The pig is surrounded by a decorative border of small red hearts.

Enjoy food vendors, artists, craftspeople, and more!  
\*All products sold are vegan\*  
Meet the critters of Critter Creek and give them treats!

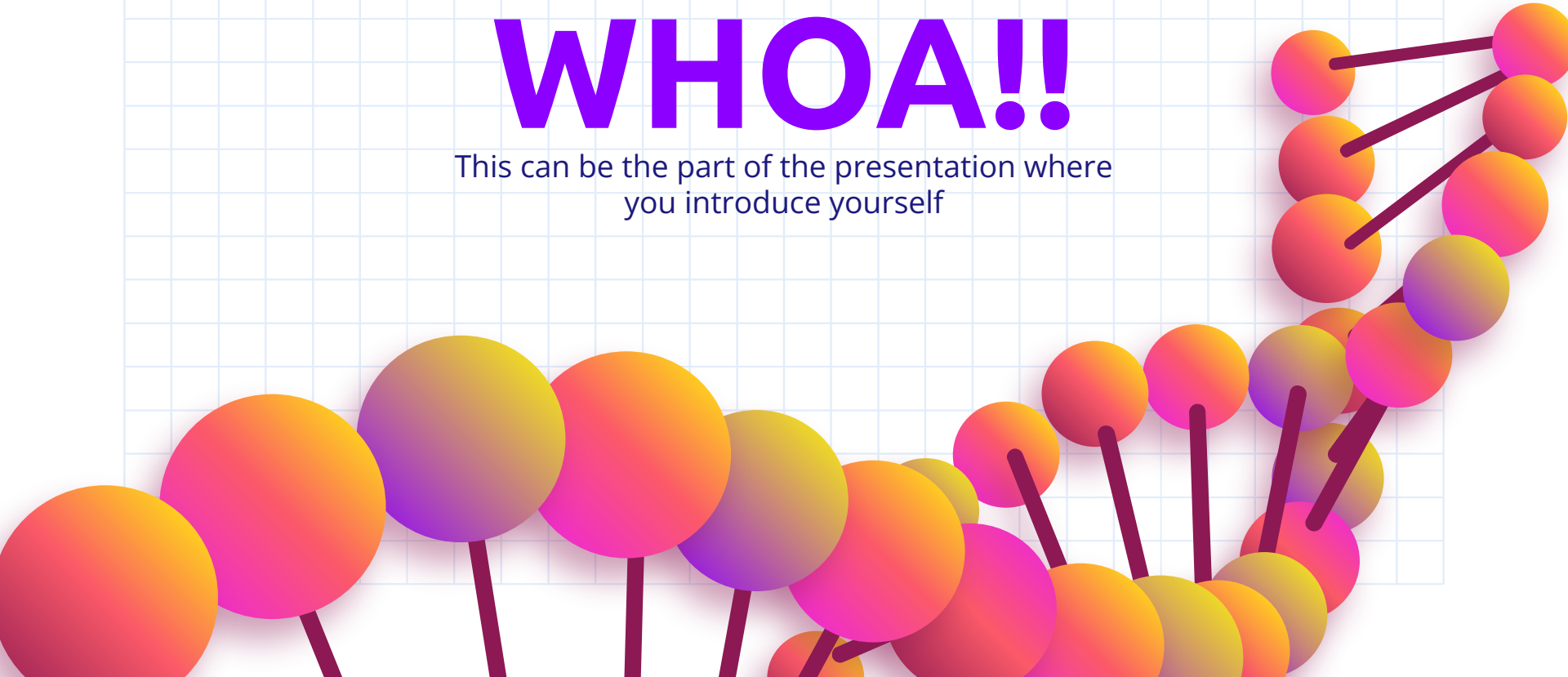


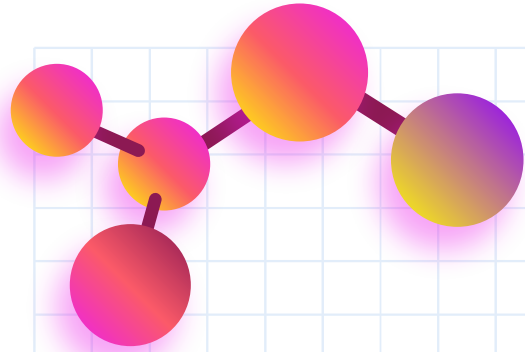
## Farmers Market

Heartwood/Haile  
Gainesville, FL

# WHOA!!

This can be the part of the presentation where you introduce yourself





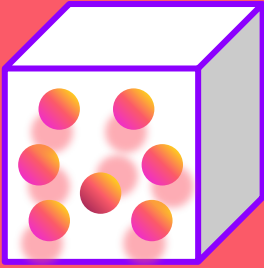
# 01

## Matter: Solids, Liquids, and Gases

You can enter a subtitle here if  
you need it

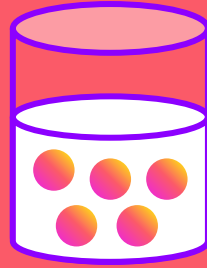


# Different states of matter



## Solid

Despite being red,  
Mars is actually a  
cold place



## Liquid

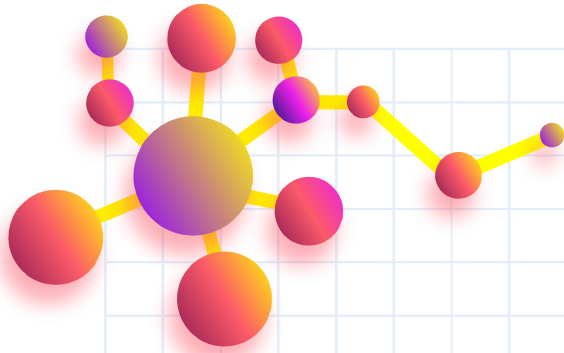
It's a gas giant and  
the biggest planet in  
the Solar System



## Gas

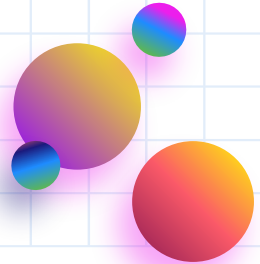
It's composed  
mostly of hydrogen  
and helium





# Awesome words

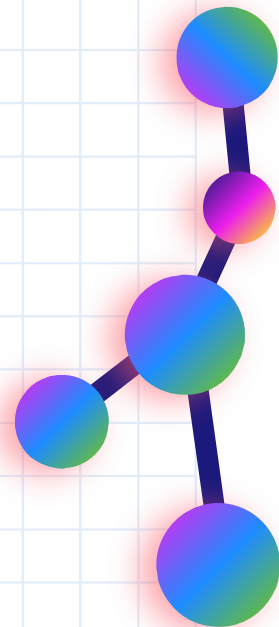
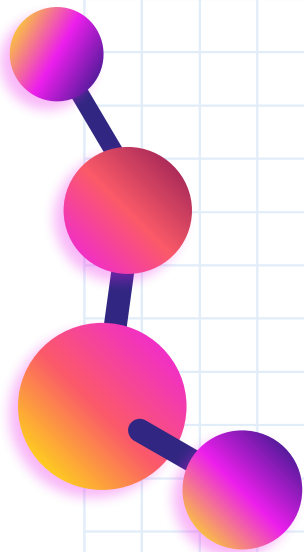
Because key words are great for catching your audience's attention



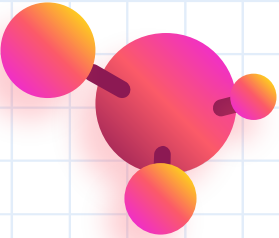
# 02

## Matter: Changes of State

You can enter a subtitle here if you need it



# Heathcare and Vi

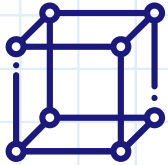


	<b>Sublimation</b>	<b>Vaporization</b>	<b>Condensation</b>
<b>Water</b>	100 °C	100 °C	212 °C
<b>Quartz</b>	52 °C	80 °C	150 °C
<b>Helium</b>	100 °C	80 °C	180 °C



# Matter: liquids, solids and gases

**Fusion**



**Solids**

It's the farthest planet from the Sun



**Liquids**

It's the third planet from the Sun

**Vaporization**



**Gases**

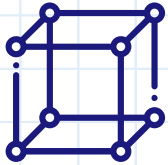
Despite being red, Mars is a cold place

**Sublimation**



# Matter: liquids, solids and gases

**Solidification**



**Solids**

It's the farthest planet from the Sun



**Liquids**

It's the third planet from the Sun

**Liquefaction**



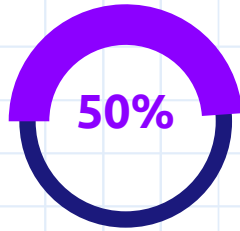
**Gases**

Despite being red, Mars is a cold place

**Reverse Sublimation**



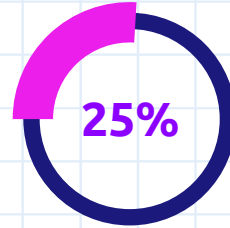
# Changes in matter that happen naturally



50%

## Liquid to solid

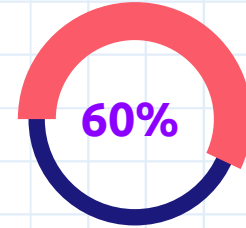
It's the third planet from the Sun



25%

## Solid to liquid

It's the farthest planet from the Sun



60%

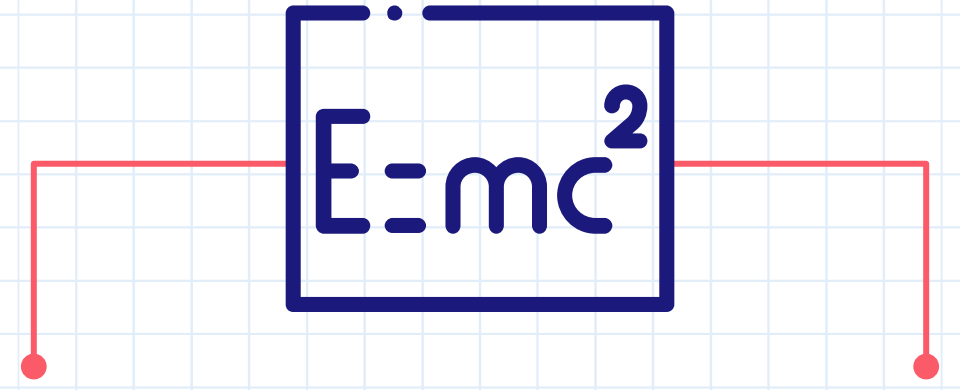
## Liquid to gas

Despite being red, Mars is a cold place



**A picture is worth a  
thousand words**

# Equivalence between mass and energy



The diagram features a central blue-outlined box containing the equation  $E=mc^2$ . Two red lines extend from the box: one to the left and one to the right. Each line has a red dot at its end, which is positioned above the word 'Energy' on the left and 'Mass' on the right.

$$E=mc^2$$

**Energy**

It's the farthest planet from the Sun

**Mass**

Despite being red, Mars is a cold place



# Which body is denser?

## Denser

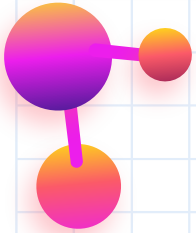
It's the farthest planet from the Sun



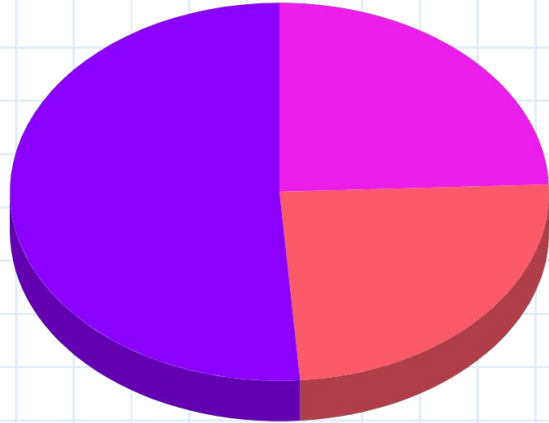
## Less dense

It's the third planet from the Sun





## You could also use a graph



### Mercury 52%

Mercury is the closest object to the Sun

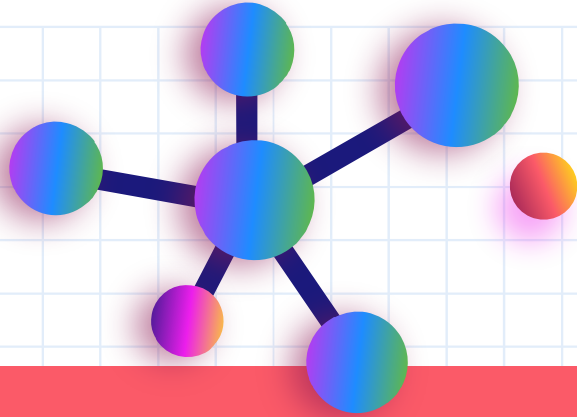
### Mars 24%

Despite being red, Mars is a cold place

### Saturn 24%

Saturn is composed of hydrogen and helium

Follow the link in the graph to modify its data and then paste the new one here. **For more info, click here**



# A picture always reinforces the concept

Use an image instead of a long text



# Let's do some practice

Name each of the selected parts

**Write it here**

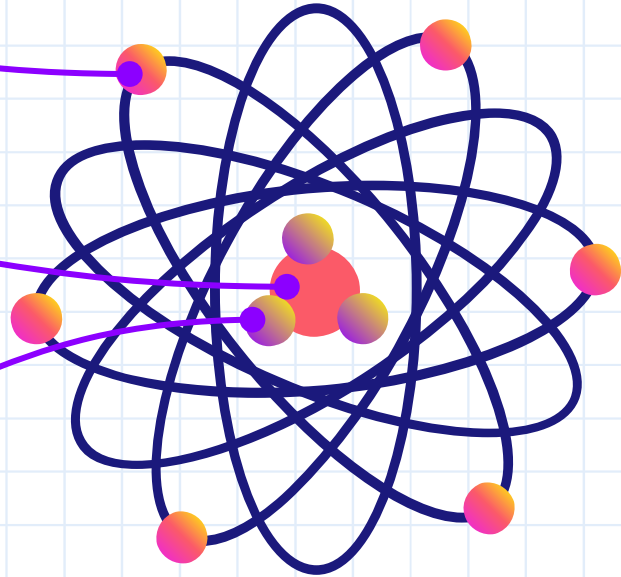
Venus has a beautiful name, but  
it's terribly hot

**Write it here**

It's the biggest planet in the  
Solar System

**Write it here**

Despite being red, Mars is  
actually a cold place



# Let's do some practice

Name each of the selected parts

## Electron

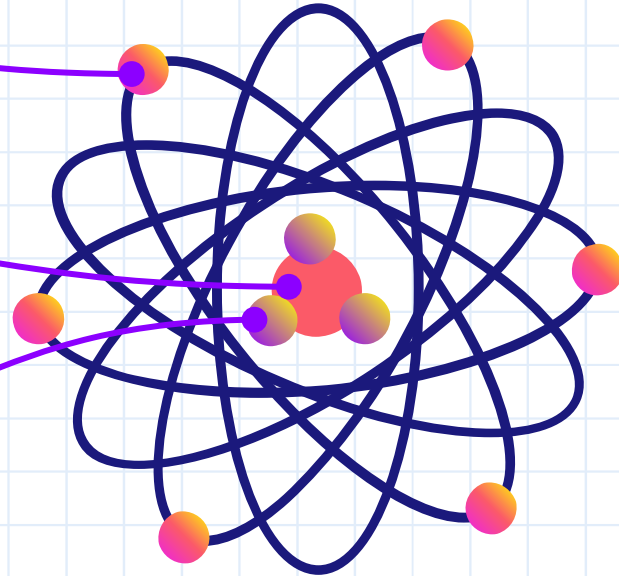
Venus has a beautiful name, but it's terribly hot

## Proton

It's the biggest planet in the Solar System

## Neutron

Despite being red, Mars is actually a cold place



# Periodic table

H																	He
Li	Be											B	C	N	O	F	Ne
Na	Mg											Al	Si	P	S	Cl	Ar
K	Ca	Sc	Ti	V	Cr	Mn	Fe	Co	Ni	Cu	Zn	Ga	Ge	As	Se	Br	Kr
Rb	Sr	Y	Zr	Nb	Mo	Tc	Ru	Rh	Pd	Ag	Cd	In	Sn	Sb	Te	I	Xe
Cs	Ba	Lu	Hf	Ta	W	Re	Os	Ir	Pt	Au	Hg	Tl	Pb	Bi	Po	At	Rn
Fr	Ra	Lr	Rf	Db	Sg	Bh	Hs	Mt	Ds	Rg	Cn	Nh	Fl	Nc	Lv	Ts	Og

# Periodic table exercise

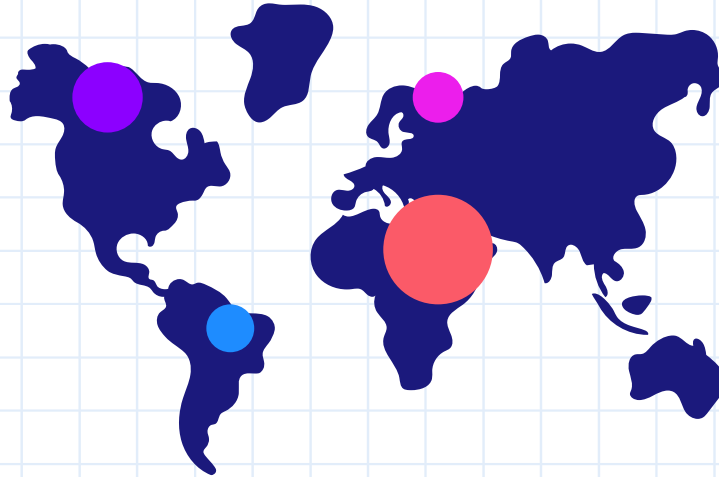
Fill the gaps with the correct element

H																	He
Li	Be											C				F	
												Si		S			Ar
	Ca		Ti	V	Cr		Fe				Zn						
											Cd		Sn		Te		Xe
	Ba		Hf				Os		Pt								Rn
Fr		Lr		Db		Bh				Rg							

# This is a map

## Mercury

Mercury is the closest planet to the Sun



## Saturn

It is composed of hydrogen and helium

## Jupiter

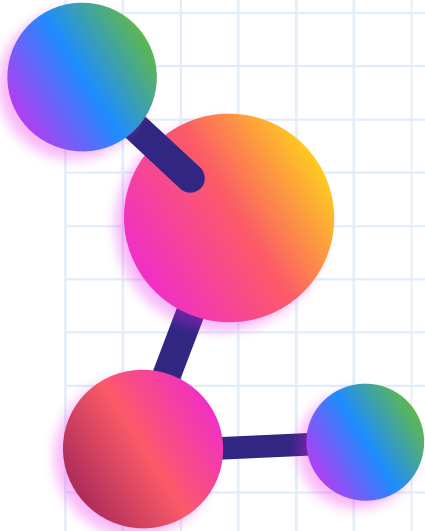
It's the biggest planet in the Solar System

## Mars

Despite being red, Mars is a cold place



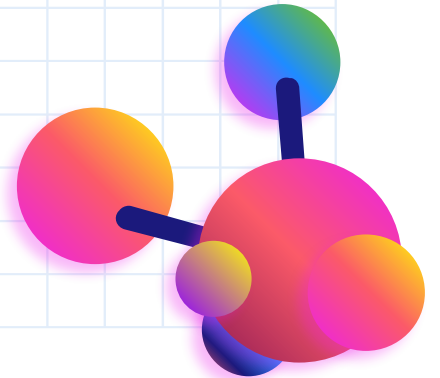
# What is a chemical reaction?



Do you know what helps you make your point clear? Lists like this one:

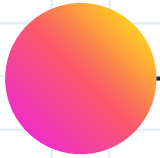
- They're simple
- You can organize your ideas clearly
- You'll never forget to buy milk!

And the most important thing: the audience won't miss the point of your presentation



# Steps to perform a chemical reaction

**Step 01**



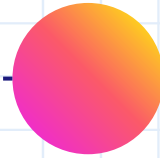
Neptune is very far away from Earth

**Step 02**



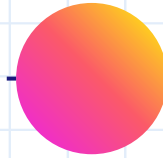
It's composed of hydrogen and helium

**Step 03**



Despite being red, Mars is a cold place

**Step 04**



Mercury is the closest object to the Sun



# Forming a precipitate

## Baking soda

Mercury is the closest planet to the Sun

## Calcium chloride

It is composed of hydrogen and helium

## Graduated cylinder

It's the biggest planet in the Solar System

## Water

Despite being red, Mars is a cold place

# Let's talk about dissolution

## Liquid in liquid

Mercury is the closest planet to the Sun

## Gas in liquid

Venus has a beautiful name, but it's terribly hot

## Liquid in gas

Despite being red, Mars is a cold place

## Solid in liquid

It's the biggest planet in the Solar System

## Solid in gas

Saturn is the ringed one and a gas giant

## Solid in solid

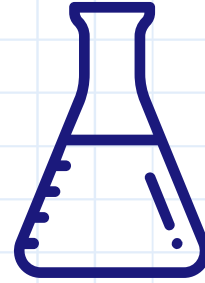
It's the farthest planet from the Sun

# Difference between solute and solvent



## Solute

It's the farthest planet  
from the Sun



## Solvent

Despite being red,  
Mars is a cold place



**333,000.00**

Earths is the Sun's mass

**9h 55m 23s**

Is Jupiter's rotation period

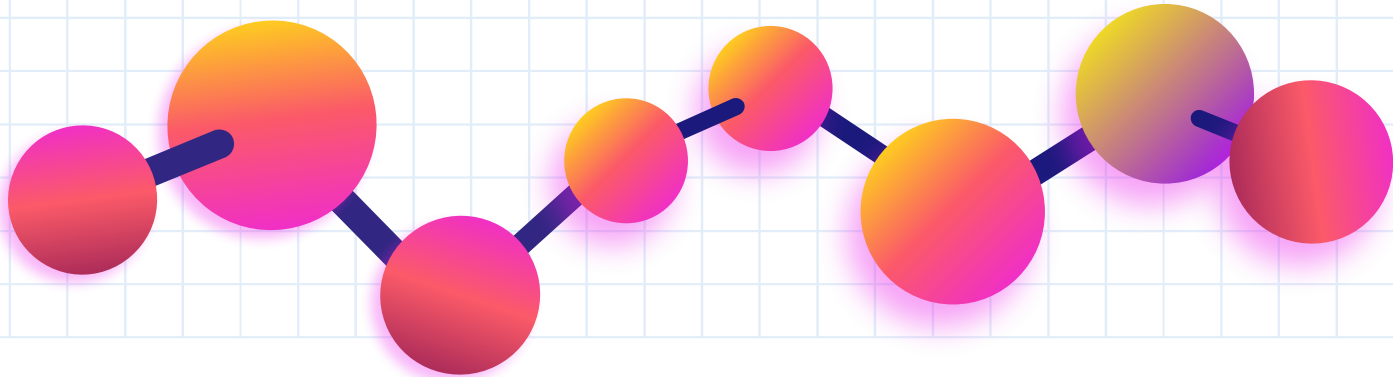
**386,000 km**

Distance between the Earth and the Moon



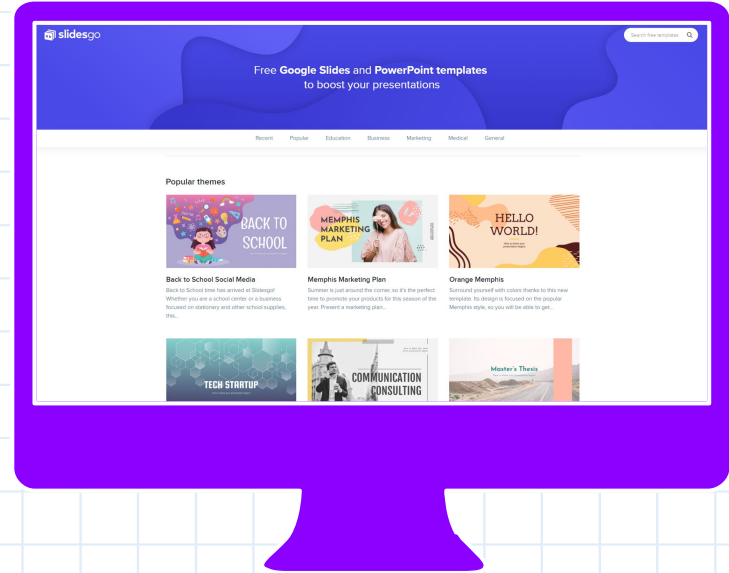
# 10,000,000

Big numbers catch your audience's attention

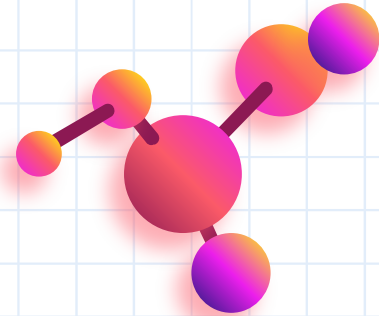
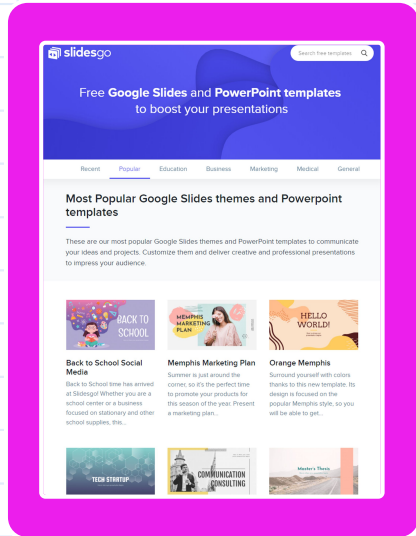


# Desktop software

You can replace the image on the screen with your own work

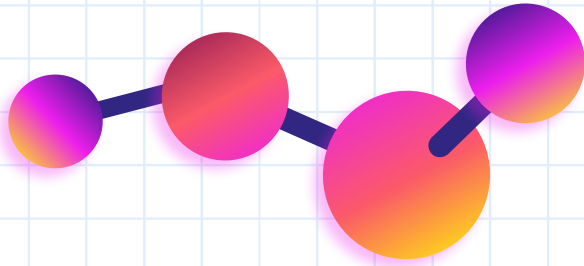






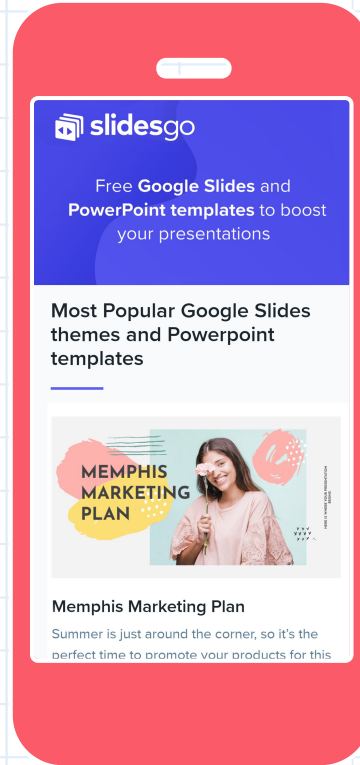
# Tablet app

You can replace the image on the screen with your own work

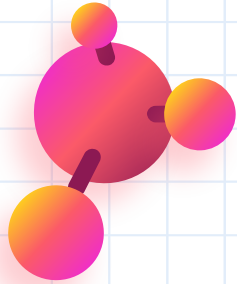


# Mobile web

You can replace the image on the screen with your own work



# Our team



**Sia James**

You can replace the image on the screen with your own



**John Doe**

You can replace the image on the screen with your own



# Thanks!

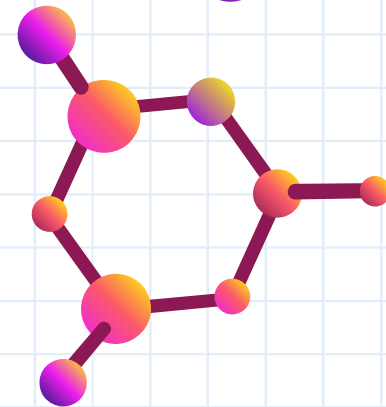
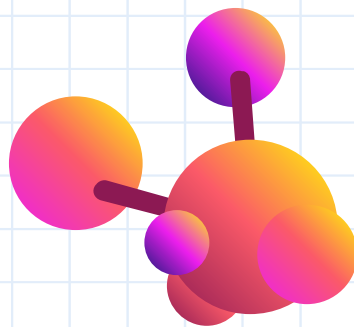
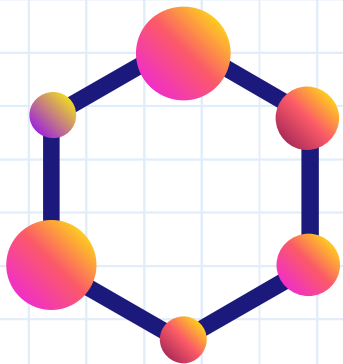
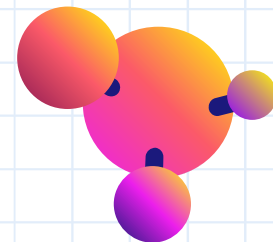
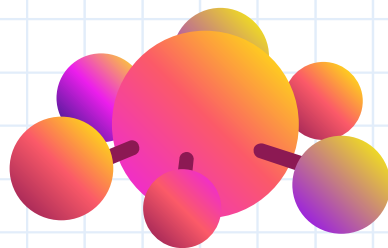
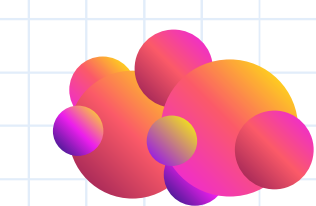
Do you have any questions?  
addyouremail@freepik.com  
+91 620 421 838  
**yourcompany.com**



**Please keep this slide for attribution**

CREDITS: This presentation template was created  
by **Slidesgo**, including icons by **Flaticon**, and  
infographics & images by **Freepik**

# Alternative resources



# Physics icon pack



# Resources

## Photos

- Medium shot scientists in lab
- Close-up researcher holding glassware
- Lab glassware and microscope arrangement
- Close-up researcher working with microscope

## Vectors

- Flat design back to school background
- Set of colored molecules
- Colorful realistic science wallpaper
- Set of colored molecules
- Colourful realistic atoms and science background
- Collection of molecular structures in flat design

## Icons

- Icon Pack: Physics | Lineal

# Instructions for use

In order to use this template, you must credit [Slidesgo](#) by keeping the [Thanks](#) slide.

## You are allowed to:

- Modify this template.
- Use it for both personal and commercial projects.

## You are not allowed to:

- Sublicense, sell or rent any of Slidesgo Content (or a modified version of Slidesgo Content).
- Distribute Slidesgo Content unless it has been expressly authorized by Slidesgo.
- Include Slidesgo Content in an online or offline database or file.
- Offer Slidesgo templates (or modified versions of Slidesgo templates) for download.
- Acquire the copyright of Slidesgo Content.

For more information about editing slides, please read our FAQs or visit Slidesgo School:

<https://slidesgo.com/faqs> and <https://slidesgo.com/slidesgo-school>



# Instructions for use (premium users)

In order to use this template, you must be a Premium user on [Slidesgo](#).

## You are allowed to:

- Modify this template.
- Use it for both personal and commercial purposes.
- Hide or delete the “Thanks” slide and the mention to Slidesgo in the credits.
- Share this template in an editable format with people who are not part of your team.

## You are not allowed to:

- Sublicense, sell or rent this Slidesgo Template (or a modified version of this Slidesgo Template).
- Distribute this Slidesgo Template (or a modified version of this Slidesgo Template) or include it in a database or in any other product or service that offers downloadable images, icons or presentations that may be subject to distribution or resale.
- Use any of the elements that are part of this Slidesgo Template in an isolated and separated way from this Template.
- Register any of the elements that are part of this template as a trademark or logo, or register it as a work in an intellectual property registry or similar.

For more information about editing slides, please read our FAQs or visit Slidesgo School:

<https://slidesgo.com/faqs> and <https://slidesgo.com/slidesgo-school>

# Fonts & colors used

This presentation has been made using the following fonts:

## Ubuntu

(<https://fonts.google.com/specimen/Ubuntu>)

## Open Sans

(<https://fonts.google.com/specimen/Open+Sans>)

#ffff00

#8c00ff

#ec1eec

#fb5a68

#8c1953

#1e8cff

#1b197c

#7bcb00

# Storyset

Create your Story with our illustrated concepts. Choose the style you like the most, edit its colors, pick the background and layers you want to show and bring them to life with the animator panel! It will boost your presentation. Check out [How it Works](#).



Pana



Amico



Bro



Rafiki

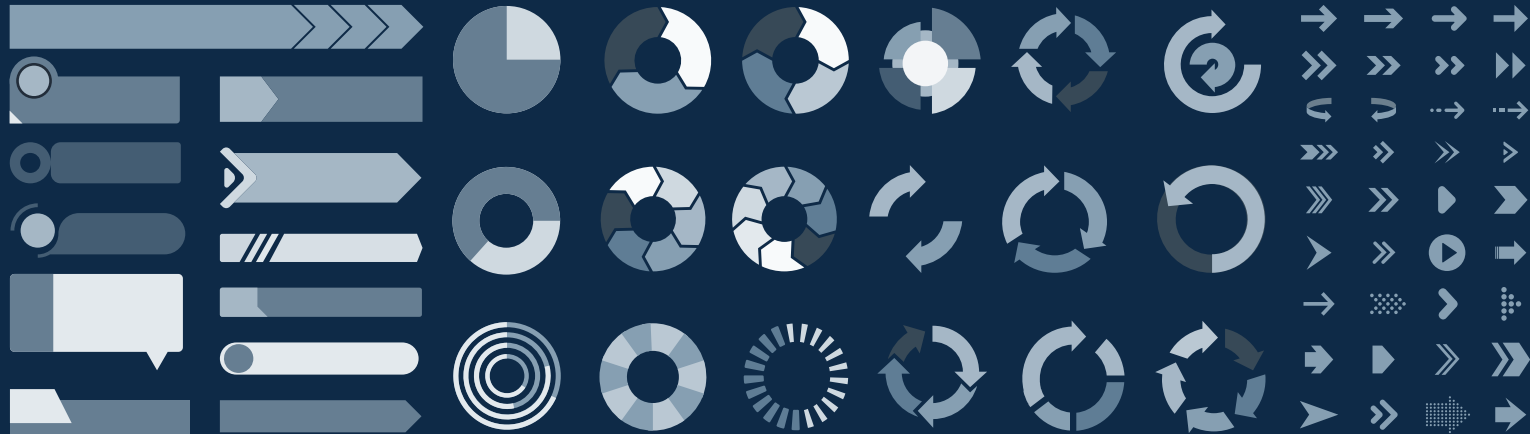


Cuate

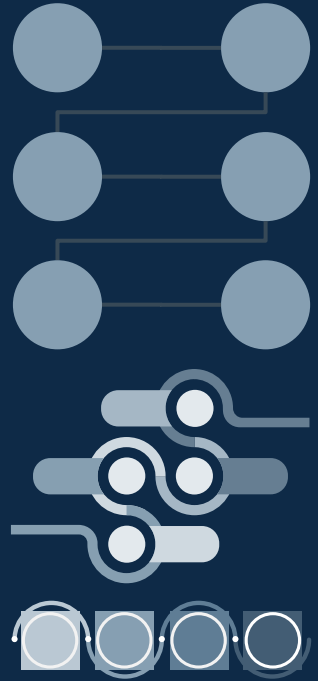
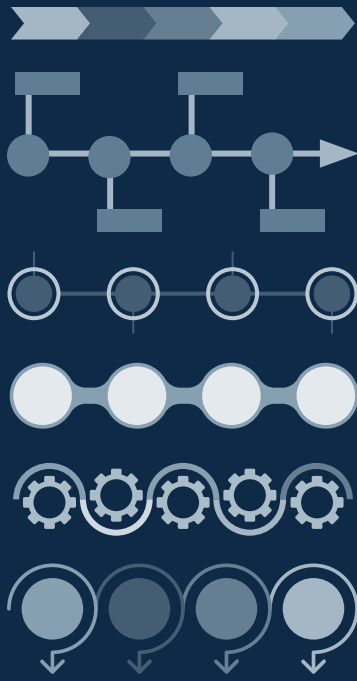
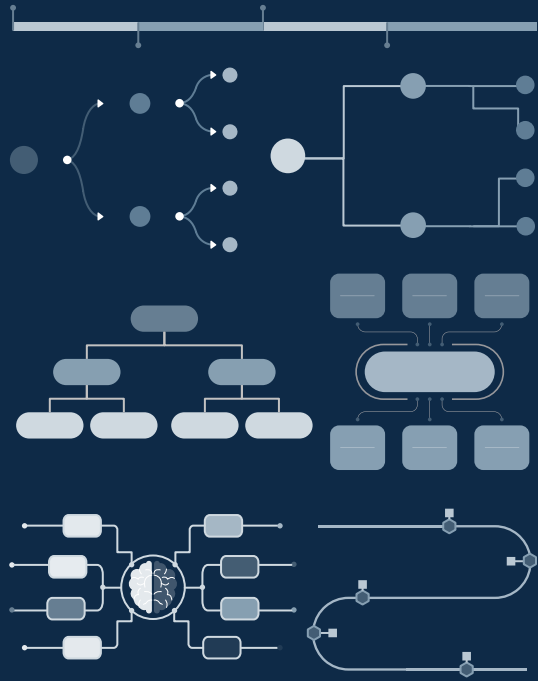
# Use our editable graphic resources...

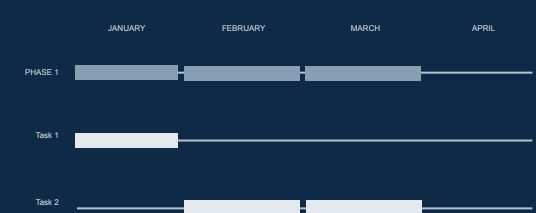
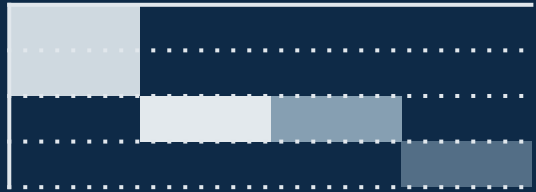
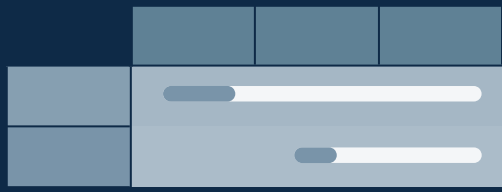
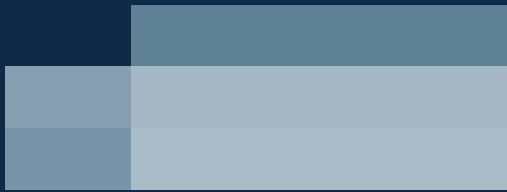
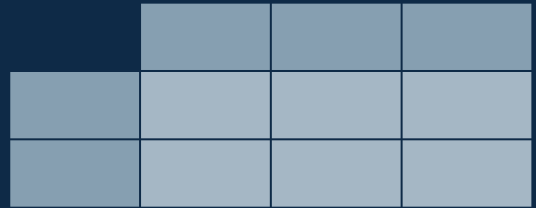
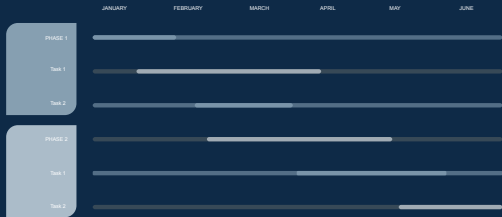
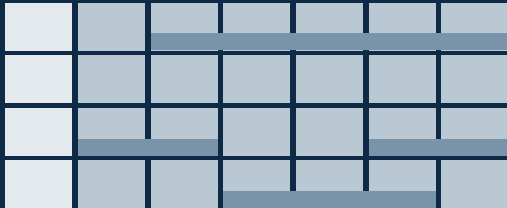
You can easily *resize* these resources without losing quality. To *change the color*, just ungroup the resource and click on the object you want to change. Then, click on the paint bucket and select the color you want.

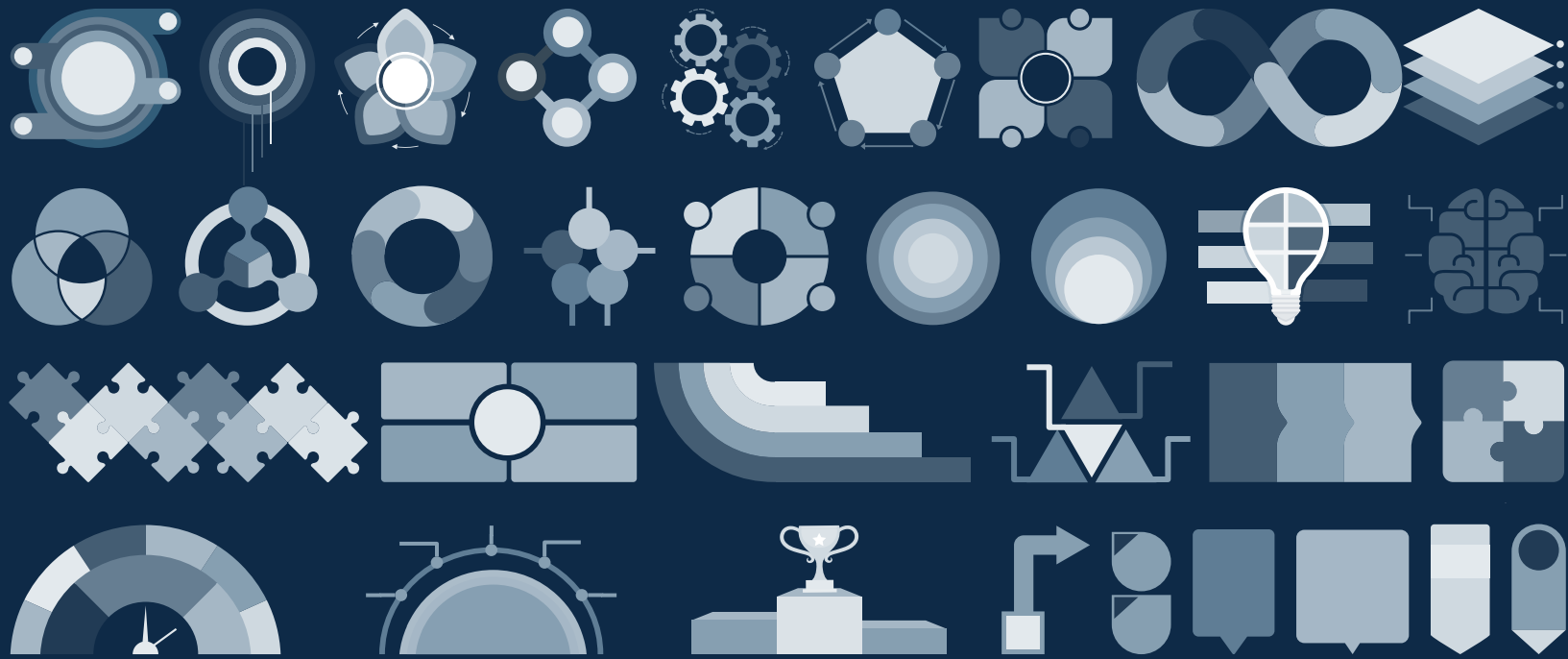
Group the resource again when you're done. You can also look for more *infographics* on [Slidesgo](#).



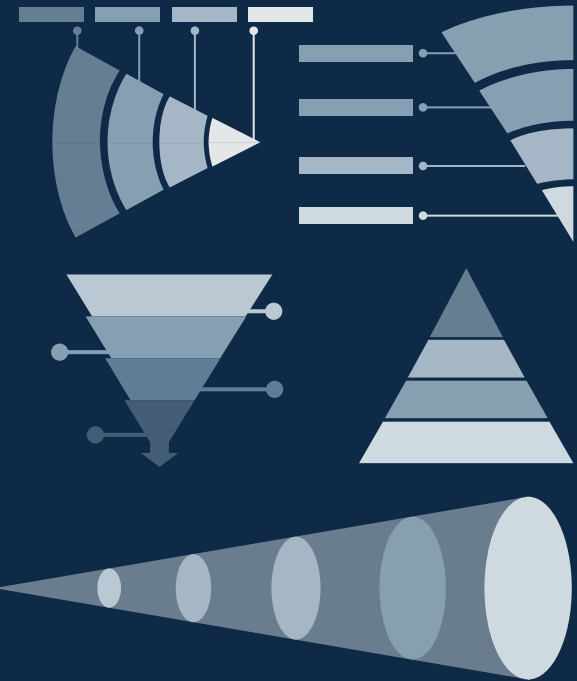
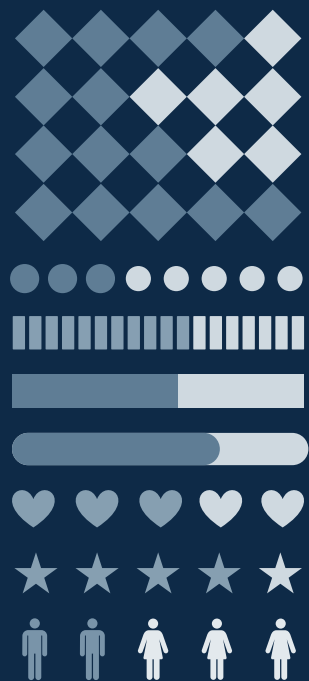
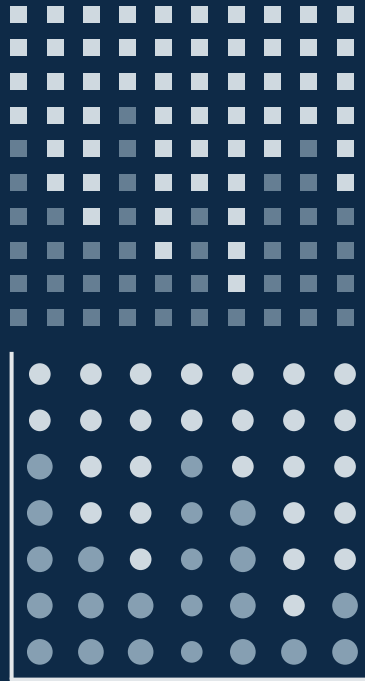












# ...and our sets of editable icons

You can resize these icons without losing quality.

You can change the stroke and fill color; just select the icon and click on the paint bucket/pen.

In Google Slides, you can also use Flaticon's extension, allowing you to customize and add even more icons.



## Educational Icons



## Medical Icons



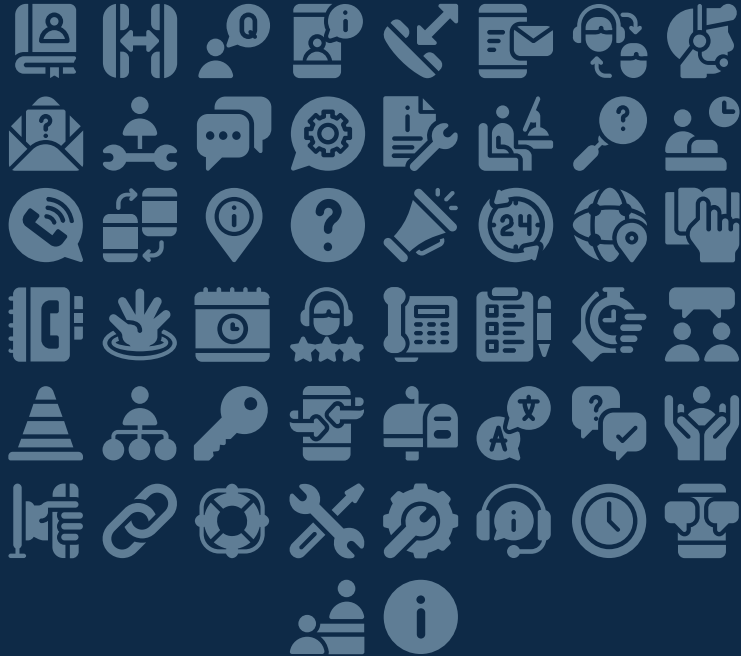
## Business Icons



## Teamwork Icons



# Help & Support Icons



# Avatar Icons





# Nature Icons



# SEO & Marketing Icons





